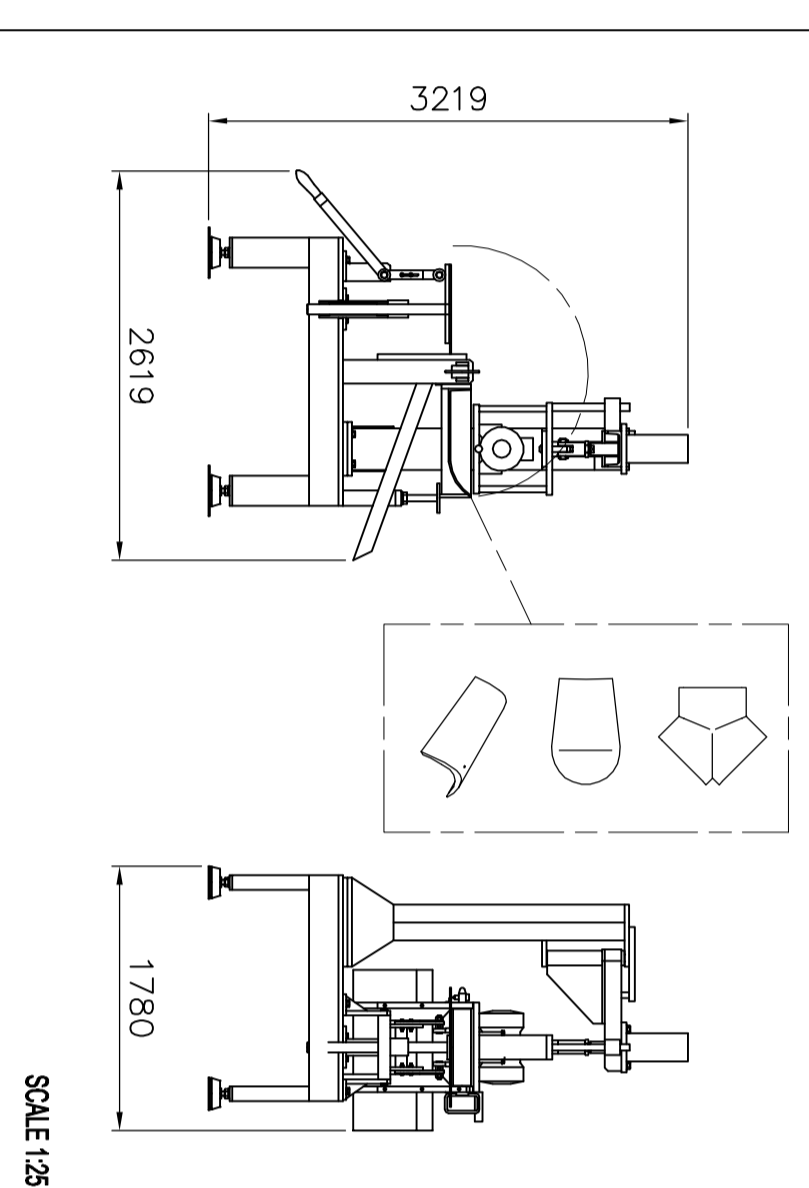
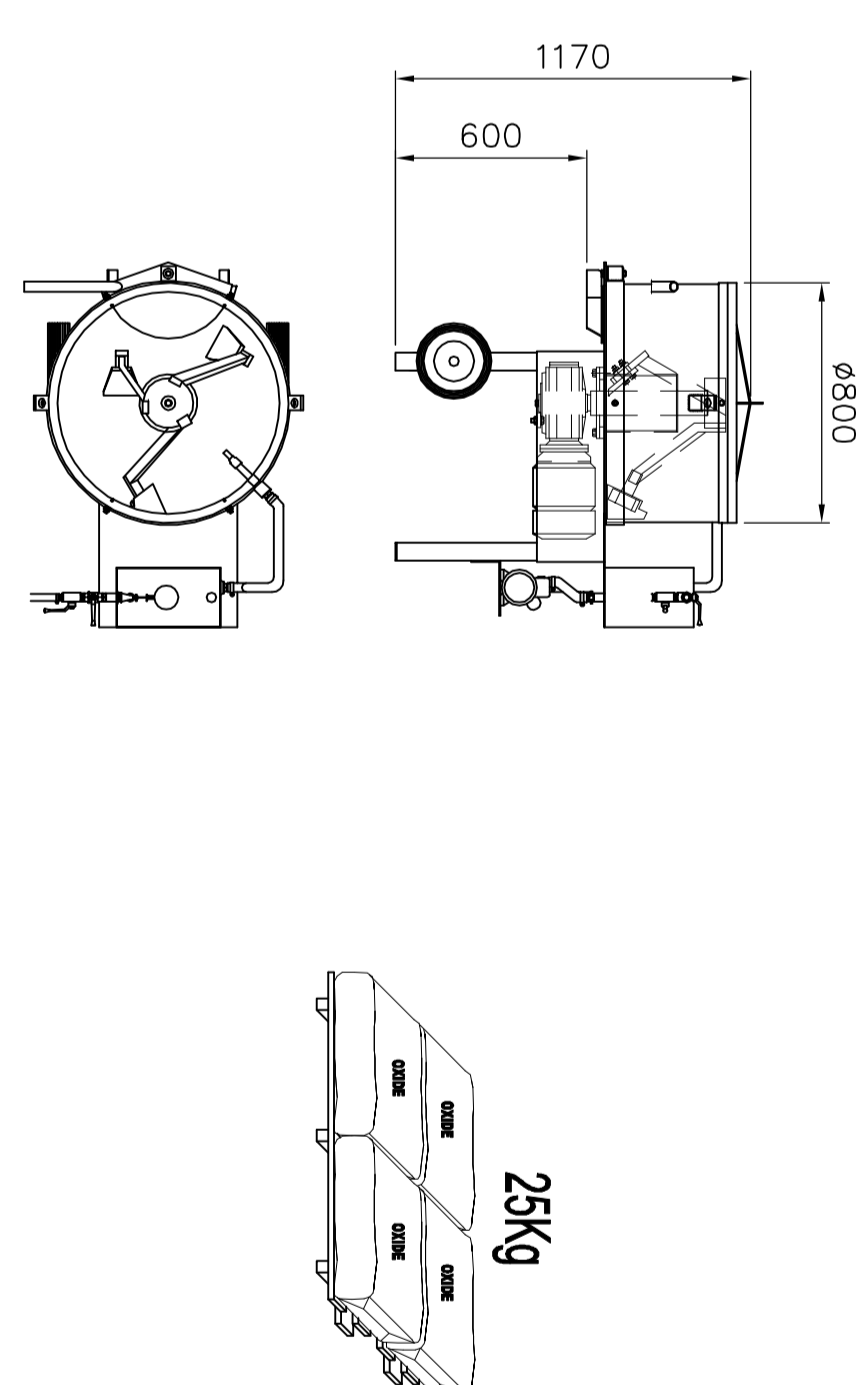


**FP VORTEX UNIVERSAL PRESS**



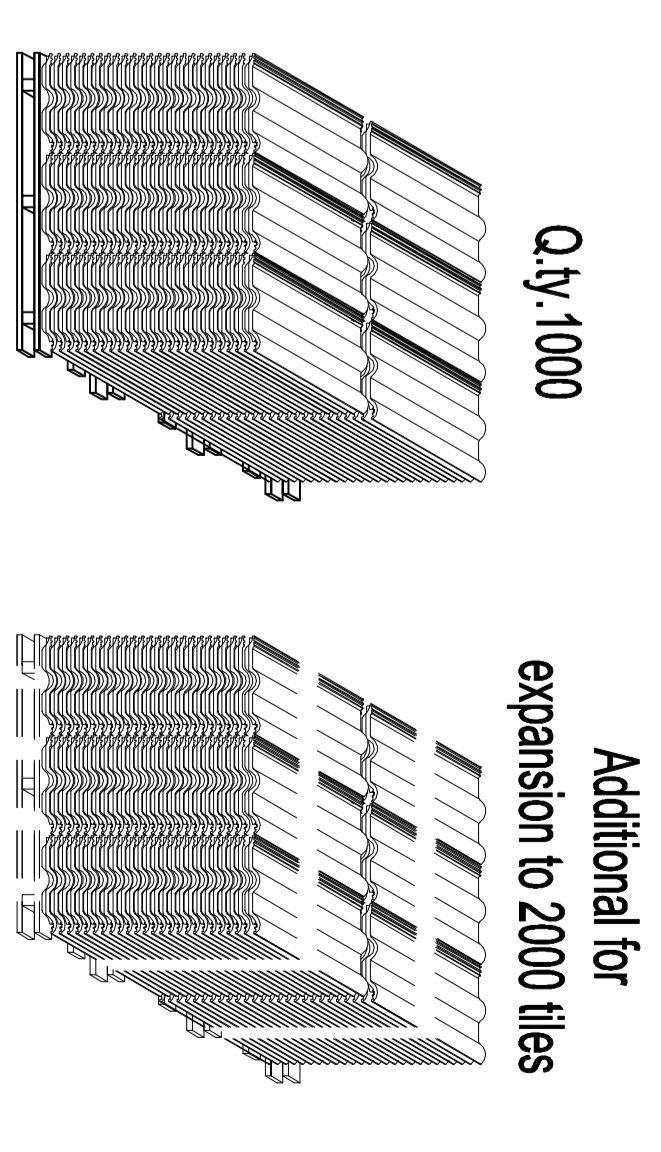
SCALE 1:25

**A05 BATCHING AND MIXING PLANT**



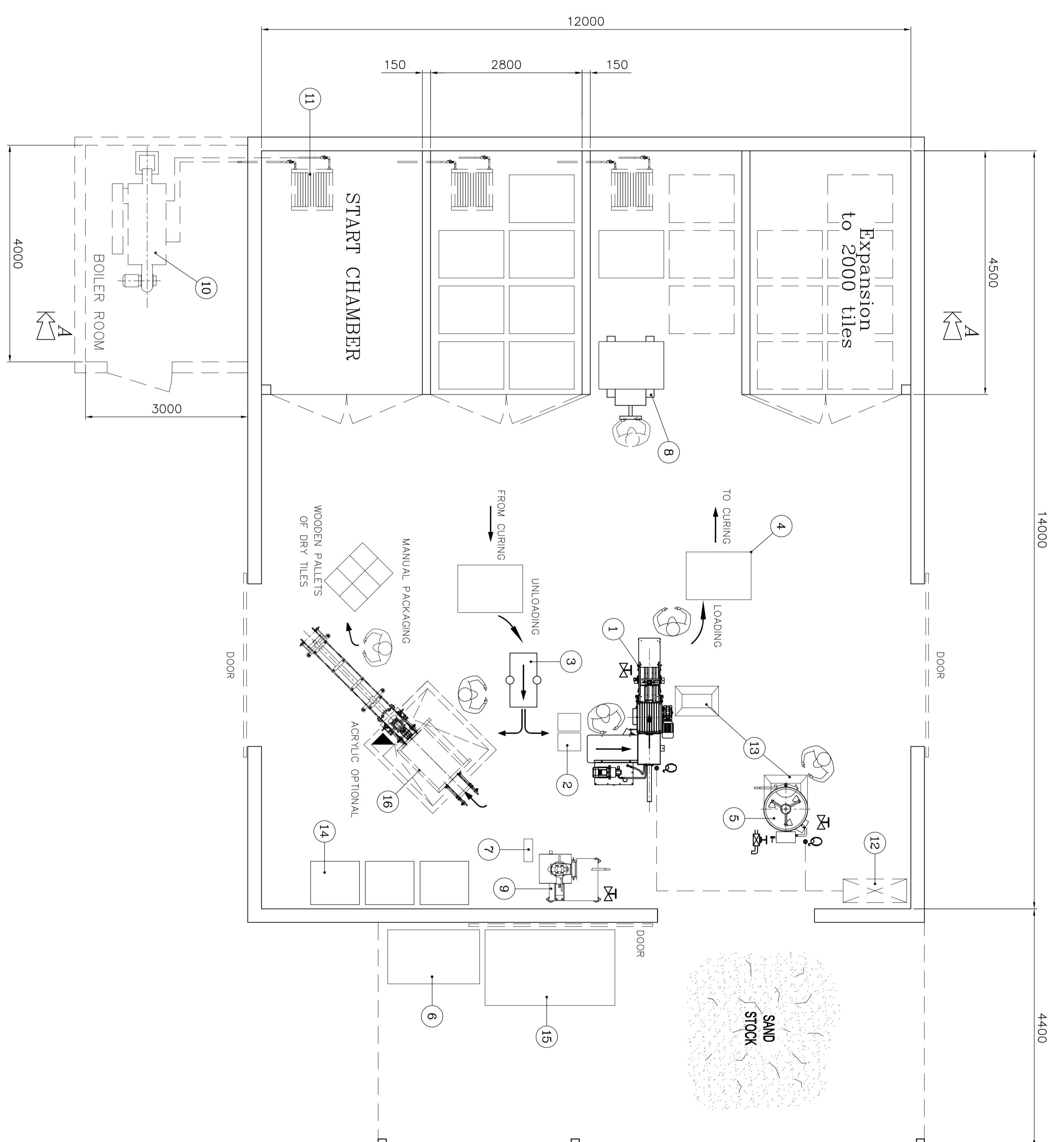
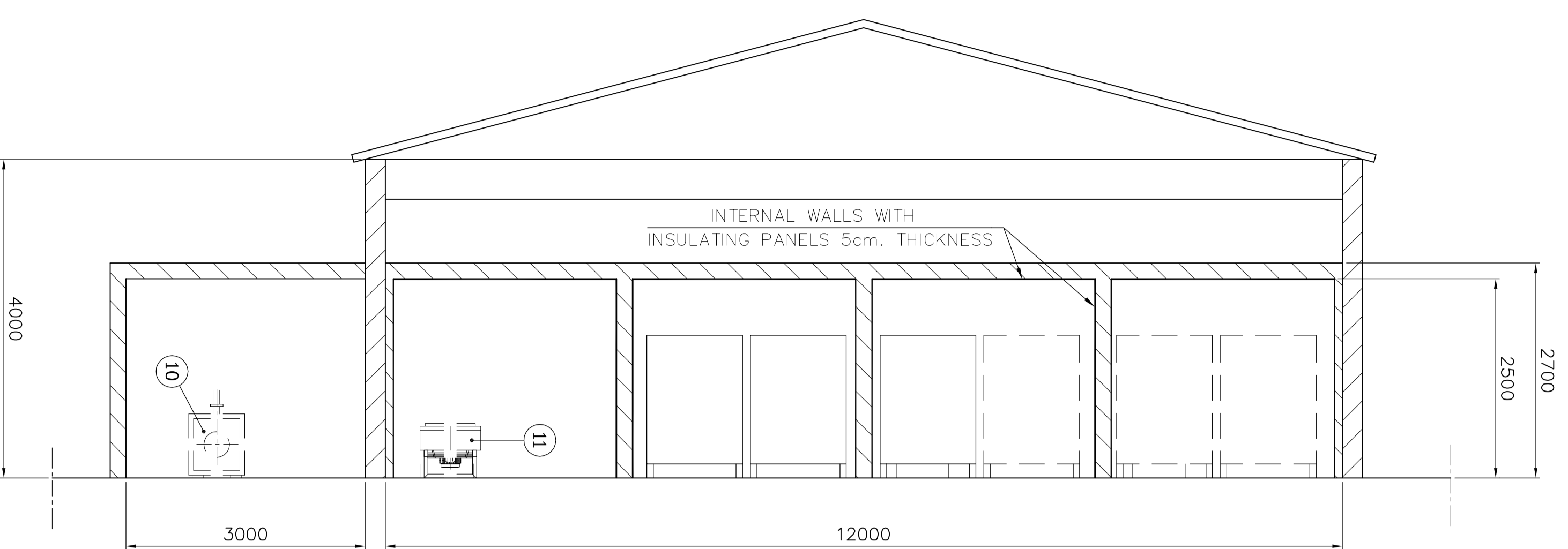
SCALE 1:25

**G1 U ALUMINIUM PALLETS FOR ROOF TILES**

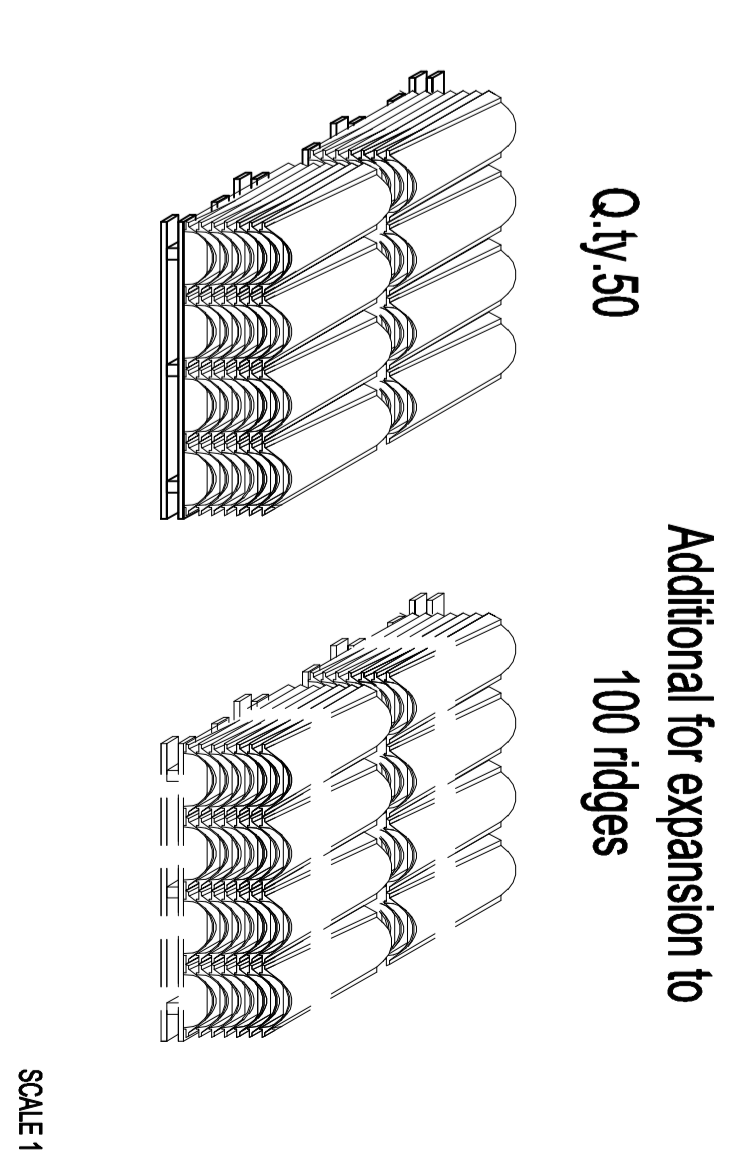


SCALE 1:25

**SECTION A-A**

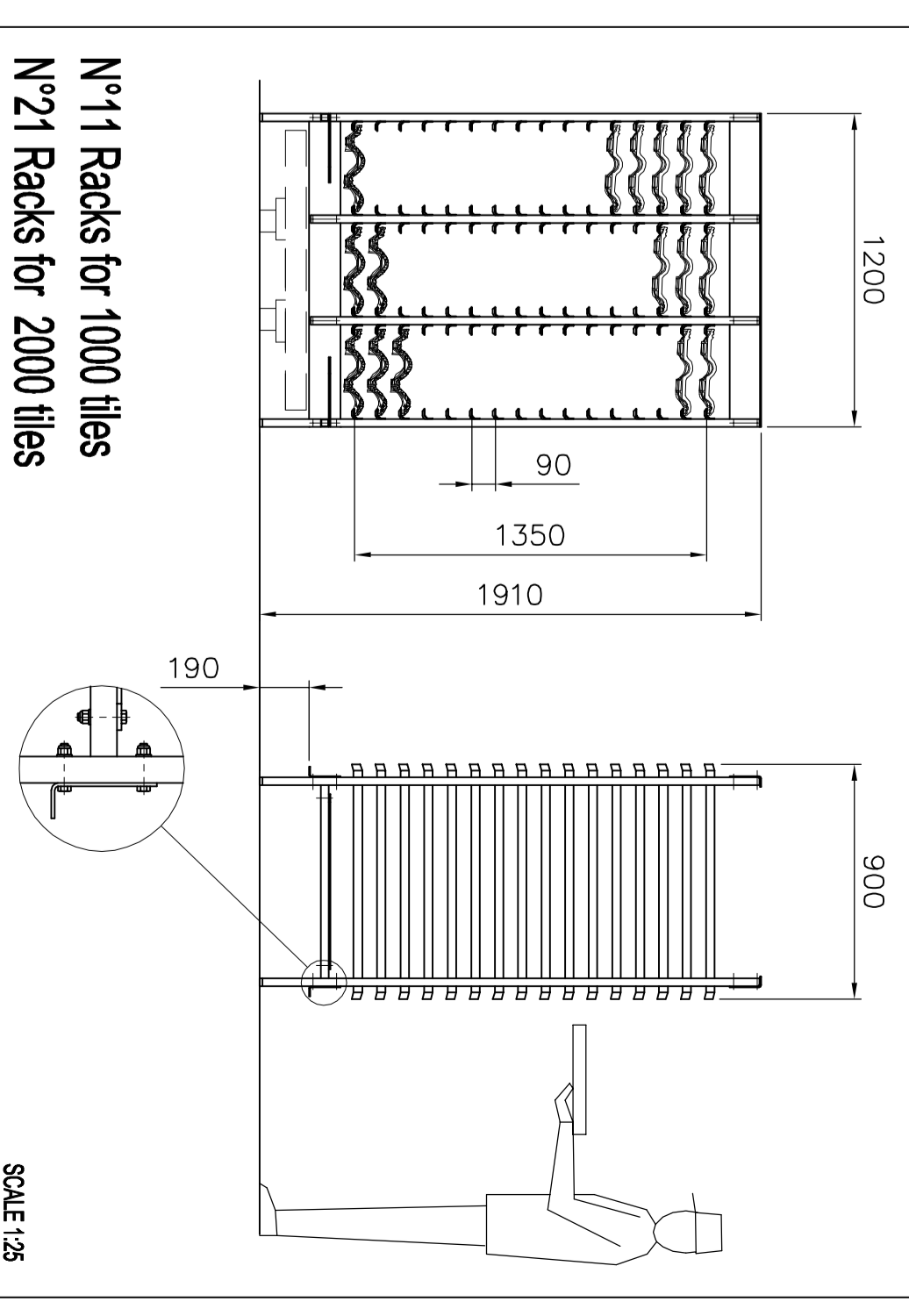


**FG1 ALUMINIUM PALLETS FOR RIDGES**



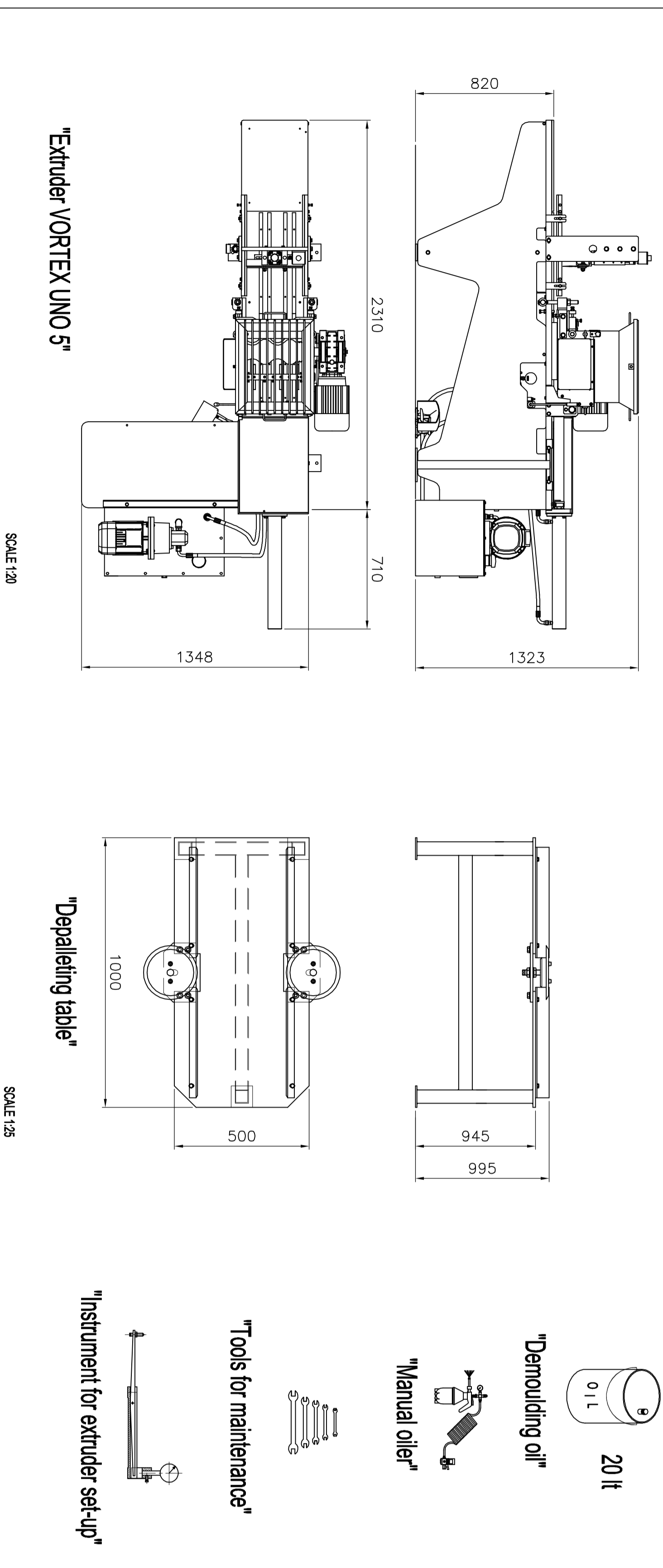
SCALE 1:25

**H1 PREFABRICATED RACK**



SCALE 1:25

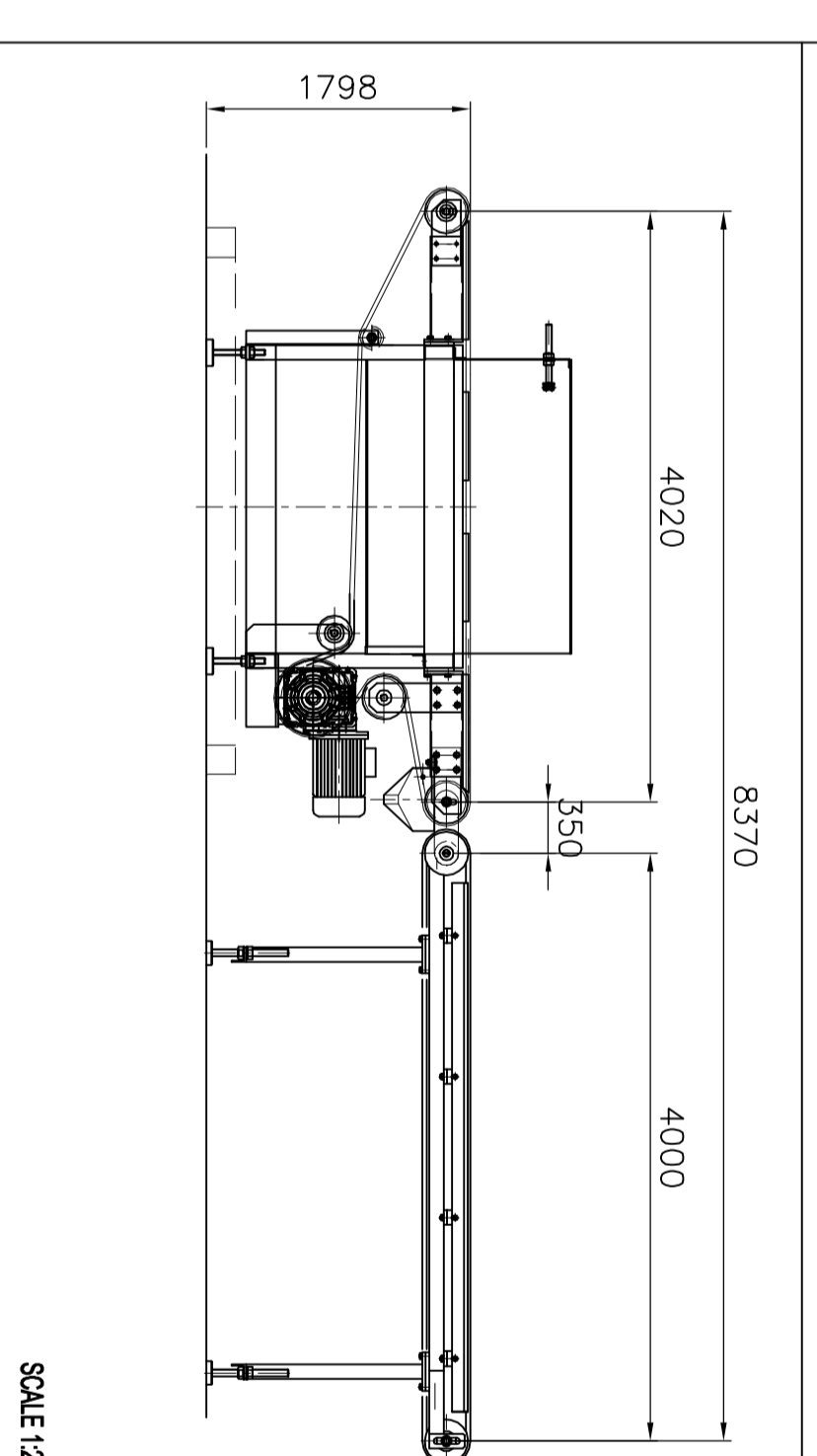
**B05 ROOF TILES MANUFACTURING EQUIPMENT**



SCALE 1:20

SCALE 1:25

**J1.1 ACRYLIC OPTIONAL**



SCALE 1:25

POINTS TO BE CONNECTED TO THE MAIN DISTRIBUTION BOARD (12) TO THE WATER SUPPLY

AIR UTILIZATION 1/2" PIPE WITH VALVE

- 16 Acrylic point applicator
- 15 Cement bags stock
- 14 Racks for 80 ridges each
- 13 Carts for mixture transport
- 12 Main distribution board in the building
- 11 Fan-heater
- 10 Boiler and pumps for heating system
- 9 Universal press
- 8 Transported to move racks
- 7 Aluminium pallets for ridges
- 6 Red iron oxide pigment in bags
- 5 Manual loading ground mixer, 100 lts. of capacity
- 4 Racks for 96 tiles/each
- 3 Depalleting table
- 2 Aluminium pallet for roof tiles
- 1 Extruder VORTEX UNO 5 (5 TILES/MINUTE)

**Vortex Hydra**

VORTEX UNO 5  
General Lay-out

PRODOTTORE E/O DISTRIBUZIONE VERVAL

Central Customer: VERVAL

PRODOTTORE E/O DISTRIBUZIONE VERVAL