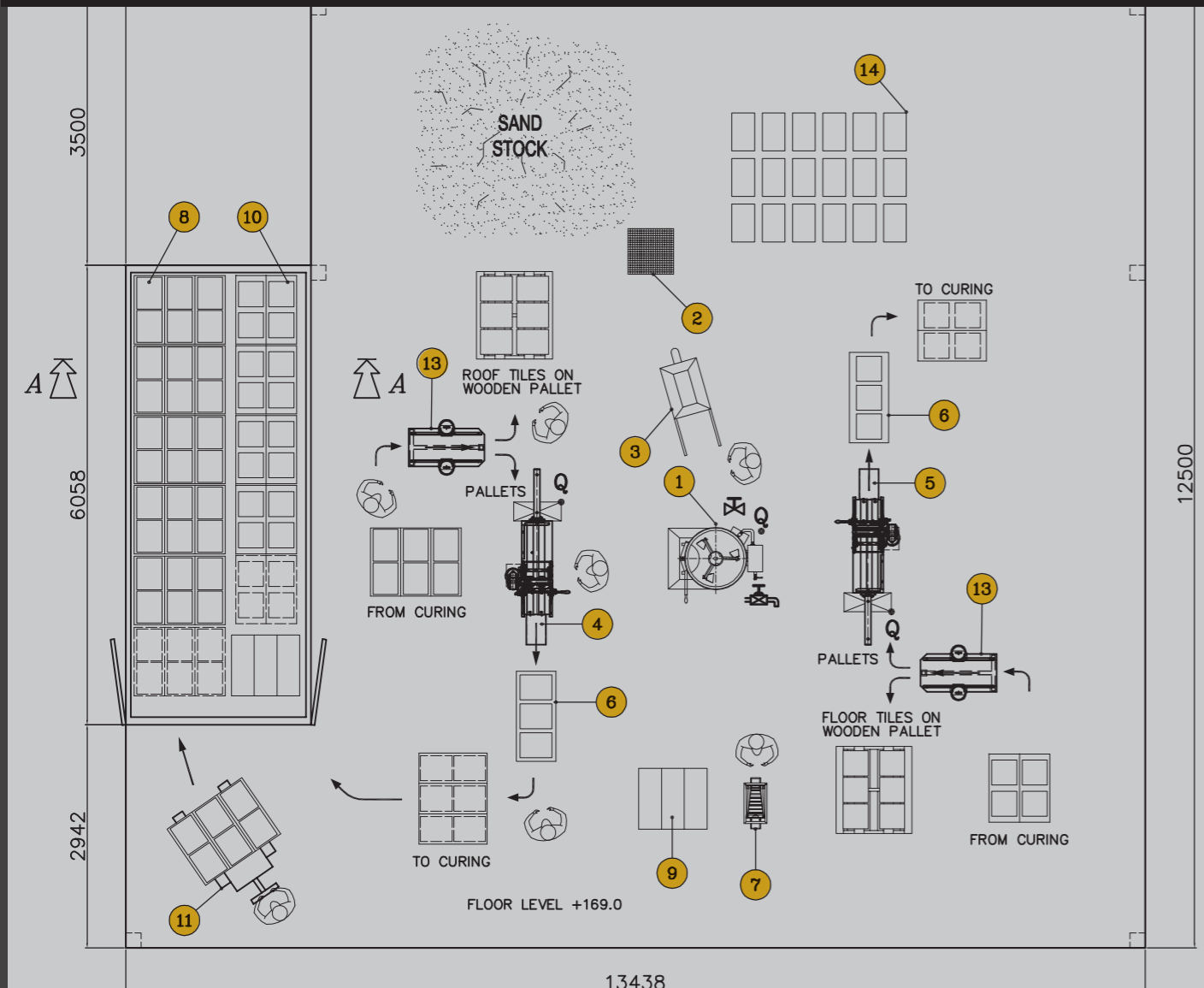


TYPICAL DAILY PLANT LAYOUT FOR UNO + UNO TWIN STARTER PACK



14	Cement
13	N° 2 Manual table to demould the cured tiles
12	Used container 20' to be utilised as the curing chamber
11	Transpallet to travel cured roof and wall/floor tiles
10	N°5 Steel curing racks (64 wall / floor tiles capacity)
9	N° 1 Steel curing rack (80 ridges capacity)
8	N° 7 Steel curings racks (96 roof tiles capacity)
7	Manual bench to produce ridges tiles
6	Holding bench for wet extruded tiles
5	UNO MINI extruder machine (2 wall/floor tiles per minute output)
4	UNO MINI extruder machine (2 roof tiles per minute output)
3	Wheel barrow and shovel to transport the sand to the "UNO" units
2	Manual screen for the sand grading
1	Small concrete mixer

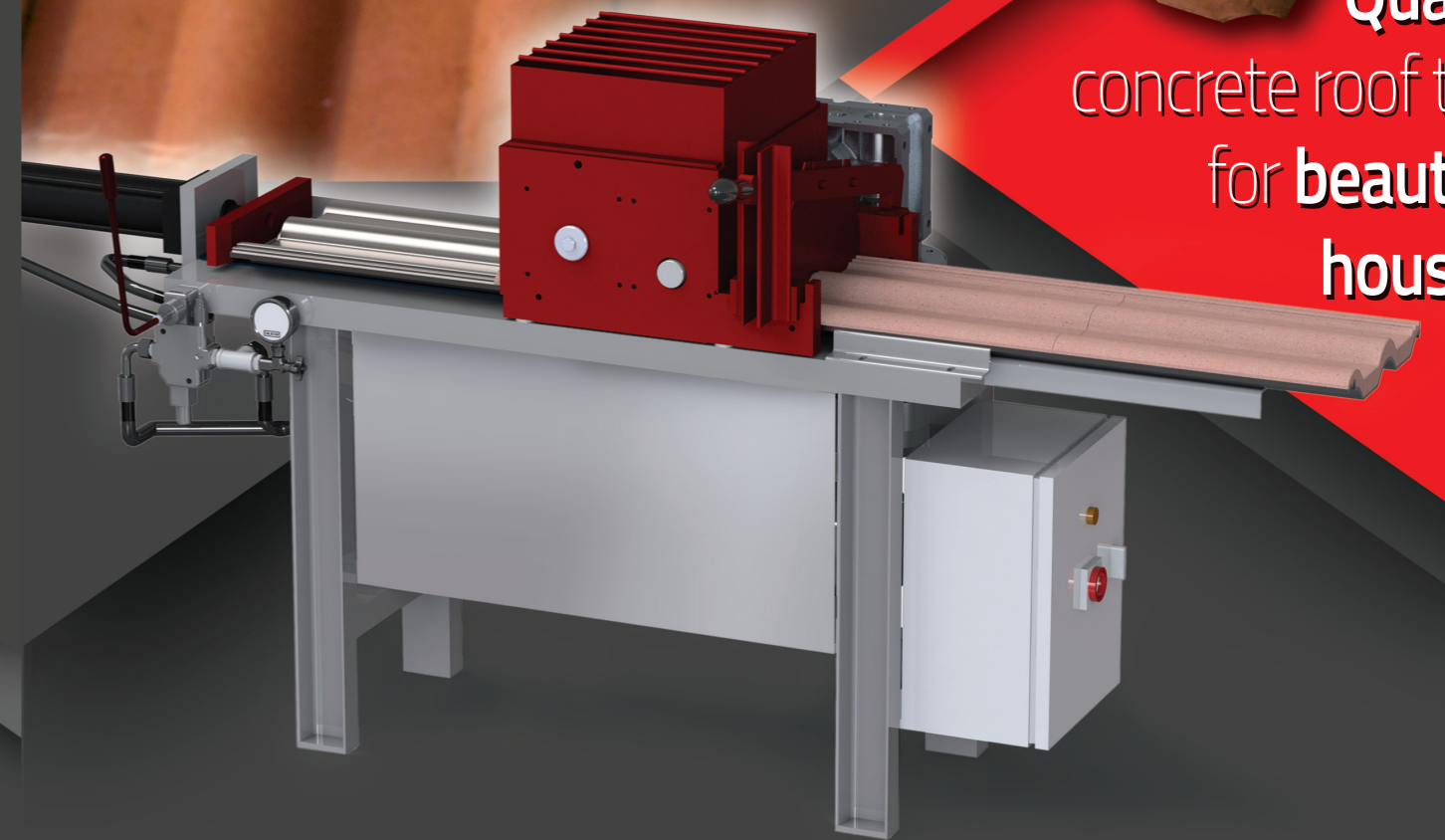


For semi-automatic and automatic production plants visit our website
www.vortexhydra.com



CREATE YOUR NEW BUSINESS WITH US

Quality
 concrete roof tiles
 for beautiful
 housing



'UNO' STARTER PACK

for coloured **concrete ROOF & FLOOR** tile manufacture



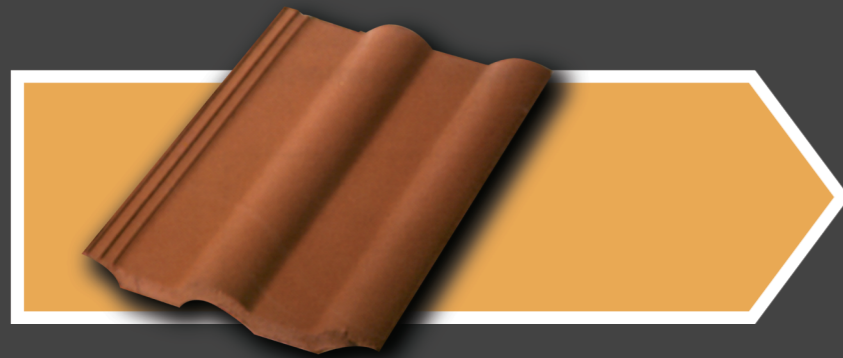
Vortex Hydra S.r.l.
 via Argine Volano 355 - 44034 Fossalta di Copparo (FERRARA) /Italy
 Tel. +39 0532 879411 Fax +39 0532 866766
vh.sales@vortexhydra.com



'UNO' STARTER PACK

for coloured **concrete ROOF tile** manufacture

The 'UNO' starter pack is an ENTRY LEVEL small turn-key plant for the manufacture of approximately **83 sq.m** of 'Double Roman' coloured concrete tile roofing per **8 hour shift**.



8 hour/shift

'UNO + UNO' TWIN STARTER PACK

for coloured **concrete ROOF & FLOOR** manufacture



8 hour/shift

The 'UNO+UNO' twin starter pack is an ENTRY LEVEL small turn-key plant for the manufacture of approximately **58 sq.m** of 'Double Roman' roofing and **28 sq.m** of 'Multiple Square' floor coloured concrete tiles per **8 hour shift**.

Why a Starter Pack?

We have now added small affordable "entry level" plants to give the opportunity to individuals and small business concerns to set up a concrete tile manufacturing business.

Both the '**UNO STARTER PACK**' and '**UNO + UNO TWIN STARTER PACK**' enables a customer to enter the building products market using small investment.

Both these Starter Pack plants are very compact units and can easily be moved from site to site to suit a customer needs. Testing the demand in local markets is very important.

These small Starter Pack plants open entry doors in the market place and can lead in the future to setting up a larger business as customer sales become well established.

The 'UNO +UNO TWIN STARTER PACK' enables a customer to produce both roof and floor/wall tiles at the same location by the employment of two small extruder machines.

THE ADVANTAGES OF OUR "STARTER PACK" PLANTS ARE MANY!



TYPICAL RAW MATERIAL REQUIREMENTS FOR UNO + UNO TWIN STARTER PACK

	ROOF TILE	FLOOR / WALL TILE
PROFILE	DOUBLE ROMAN	MULTI SQUARE
TILE DIMENSION	420 mm x 330 mm x (12mm ab. of thickness)	330 mm x 330 mm x 11/15mm
COVERING CAP	10 tiles/ m2 approx., depending on roof pitch	approx. 9 tiles /sq.m.
WEIGHT	approx. 4.2 kg per tile (42 kg/m2)	3.7 kg per tile (34 kg/m2)
RAW MATERIALS	COLOUR EN - MASSE TILE - Portland grey cement: 0.9 kg/tile - Washed sand: 3,3 kg/tile (granulometry 0.1 to 4 mm) - Water/cement ratio: 0.40 approx. - Colour (ferric oxide pigments): in the whole mass, 30 grams/tile	COLOUR EN - MASSE - Portland grey cement: 0.82 kg/tile - Washed sand: 2.88 kg/tile (granulometry 0.1 to 4 mm) - Water/cement ratio: 0.40 approx. - Colour (ferric oxide pigments): in the whole mass, 33 grams/tile